



HOW WE CREATED TECHNOLOGY-RICH  
LEARNING ENVIRONMENT AT SIS

TECHNOLOGY AT SIS

# WHY

- At SIS we believe that every student should have access to the best possible tools for learning.
- And teachers should have access to the best possible tech tools for teaching

# PHASE 1: ESTABLISHING THE INFRASTRUCTURE

(Year: 2012)

- Preparing our network and systems for Deployment
- Deploying the devices

# DEPLOYING THE DEVICES

- Shared iPads (2-1) for Primary (Early years - grade 4)
- 1-1 iPads for Grade 4 & 5 Students
- 1-1 Chromebooks for Grade 6-8 Students
- 1-1 Macbook Air for Grade 9-12 Students
- 1-1 Macbook Air for every staff Member (Including clerical, kitchen, maintenance staff)
- Apple TV & Projectors in Each Classroom

# PHASE 2: ENABLING THE CLASSROOM

(Year: 2013-present)

- Launching Tech Bar
- Technology Integration Training for staff
- Moving our learning and teaching resources in the cloud (online), accessible anytime anywhere
- Establishing routines for support and maintenance

# TECH BAR

- A tech-meeting space for learning, collaboration and technology integration.
- Accessible for whole school community
- Open daily from 09.30-11:30 (main building) and 13:00-15:00 (Annexe) for drop-in support related to technology in school.

# HOW HAS IT TRANSFORMED LEARNING IN THE CLASSROOMS?

What if you didn't have to write Lab reports



Regular code camps are arranged in partnership with Stockholm's vibrant tech startup community





# Other Examples of technology integration



VR experiences

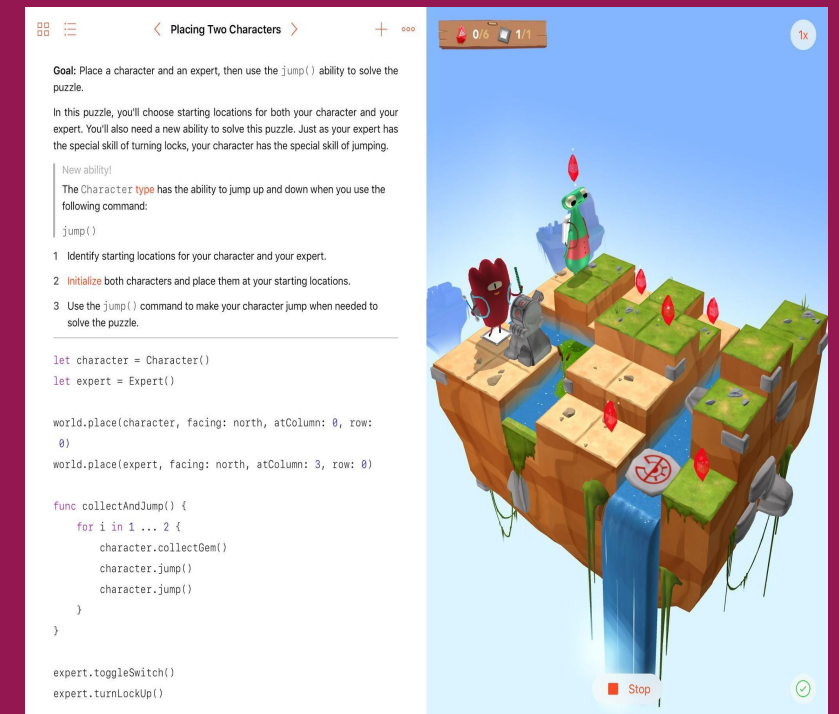
Programming

Videos & Podcasts

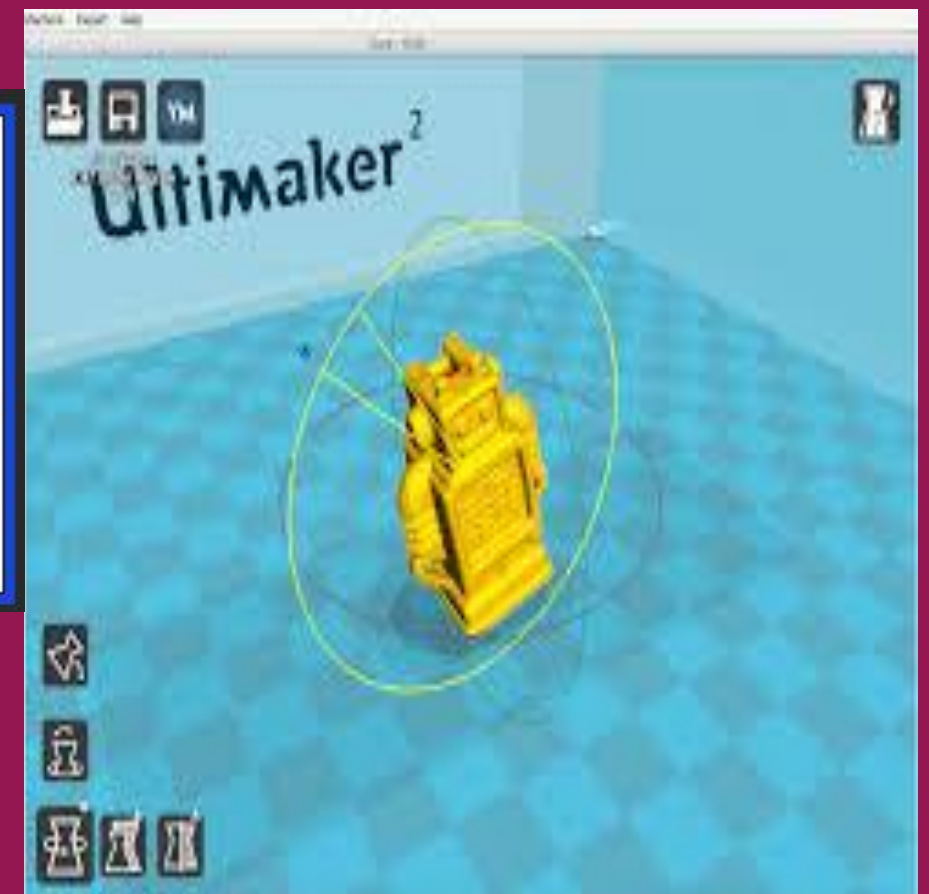
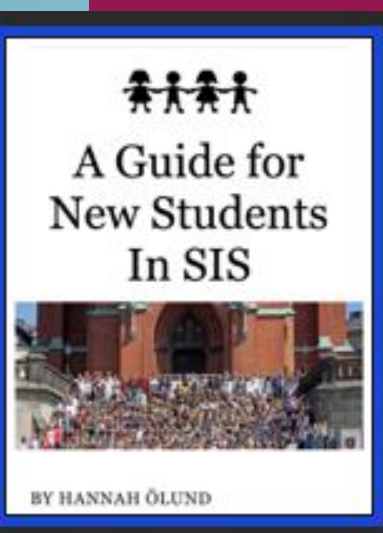
3D printing

iBooks

Robotics



Strawbees:



## PHASE 3: WHERE DO WE GO FROM HERE?

- Create a sustainable learning environment that is future ready.
- Implement a wide range of multifaceted learning opportunities for our faculty, including the SIS IT Driver's license.
- Create a school wide edtech skills framework

# SIS IT DRIVER'S LICENSE for Teachers

(Five Key Elements)

- Devices Essentials
- G Suite Training
- Managebac
- Online Security and Digital Citizenship
- Technology Integration Matrix (TIM)

# What are the challenges?

- Current Infrastructure and space constraints
- Measuring progress in an international environment where students move every 2.5 years.

# Thank you!

- Any questions? Comments? Suggestions?
- For more information please visit a more detailed timeline regarding deployment and implementation [here](#)

Feel free to contact us at

Anurag Choudhary - [a.choudhary@intsch.se](mailto:a.choudhary@intsch.se)

Ryan Kingsley - [r.kingsley@intsch.se](mailto:r.kingsley@intsch.se)

Sandra Loureiro - [s.loureiro@intsch.se](mailto:s.loureiro@intsch.se)